



SECURITY

Professional Security & CCTV Solutions Manufacturer

CCTV Bracket • Junction Box • Combination Pole

JUNCTION BOX & BRACKET

Applicable for Dahua Cameras



D120

- 115*160*35mm
- Aluminum



D121

- 134*133.5*56mm
- Aluminum



D122

- 134*133.5*56mm
- Aluminum



D123

- 134*133.5*52mm
- Aluminum



D130

- \varnothing 124*41mm
- Aluminum



D134

- \varnothing 90*35mm
- Aluminum+SECC



D135

- \varnothing 90*34mm
- Aluminum



D136

- \varnothing 110*34mm
- Aluminum



D137

- \varnothing 122*34.2mm
- Aluminum



D138

- \varnothing 160.9*38mm
- Aluminum



D139

- \varnothing 108*28.5mm
- Aluminum



D13A

- \varnothing 96*36.7mm
- Aluminum



D13F

- \varnothing 160.9*43.4mm
- Aluminum+SECC



D13G

- \varnothing 111.6*36mm
- Aluminum+SECC



D203

- 160*122*76mm
- Aluminum



D204

- 160*122*76mm
- Aluminum



D205

- 160*122*76mm
- Aluminum



D2203

- 162*129.4*80mm
- Aluminum



D2204

- 162*129.4*80mm
- Aluminum



D206

- 222*160.7*144.4mm
- Aluminum



D211

- 235.4*180.3*84.2mm
- Aluminum



D302S

- 134*133.5*187.5mm
- Aluminum



D300C

- \varnothing 133.6*235.5mm
- Aluminum



D301-C

- \varnothing 128.8*35.5mm
- Aluminum



D112

- $\varnothing 53 \times 220 \text{mm}$
- Aluminum



D113

- $\varnothing 53 \times 420 \text{mm}$
- Aluminum



D100

- $\varnothing 151 \times 37 \text{mm}$
- Aluminum



D101

- $\varnothing 159 \times 35 \text{mm}$
- Aluminum



D102

- $\varnothing 169 \times 37 \text{mm}$
- Aluminum



D103

- $\varnothing 133 \times 37 \text{mm}$
- Aluminum



D110

- $\varnothing 59 \times 53 \text{mm}$
- Aluminum



D111

- $\varnothing 60 \times 49 \text{mm}$
- Aluminum



D114

- $\varnothing 60 \times 50 \text{mm}$
- Aluminum



D220C

- $\varnothing 128.8 \times 767 \text{mm}$
- Aluminum



D116

- $\varnothing 60 \times 58 \text{mm}$
- Aluminum



D117

- $\varnothing 33 \times 780 \text{mm}$
- Aluminum



D106

- $\varnothing 134.1 \times 83.5 \text{mm}$
- Aluminum



D107

- $\varnothing 134.1 \times 83.5 \text{mm}$
- Aluminum



D109

- $\varnothing 134.1 \times 83.5 \text{mm}$
- Aluminum



D150

- $130.4 \times 170 \times 45 \text{mm}$
- SECC



D151

- $243 \times 170 \times 138 \text{mm}$
- SECC



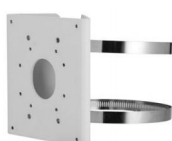
D152

- $125.6 \times 114 \times 20 \text{mm}$
- Aluminum



D154

- $130.4 \times 170 \times 45 \text{mm}$
- SECC



D156

- $140 \times 130.4 \times 45 \text{mm}$
- Aluminum



D157

- $140 \times 130.4 \times 45 \text{mm}$
- Aluminum



D303S

- $879 \times 836 \times 180 \text{mm}$
- Thickness: 3mm
- Aluminum

JUNCTION BOX & BRACKET

Applicable for Hikvision Cameras



H258

- 111*120*162.8mm
- ABS Alloy



H259

- \varnothing 111*39.2mm
- ABS Alloy



D260

- \varnothing 105*36mm
- Aluminum



HXS

- \varnothing 100*43.2mm
- Aluminum



HS

- \varnothing 137*54mm
- Aluminum



HM

- \varnothing 157*53.4mm
- Aluminum



HTR12

- \varnothing 123*168.2*45mm
- Aluminum



HTR13

- \varnothing 110*43.5mm
- Aluminum



HDM8

- \varnothing 126.7*35mm
- Aluminum



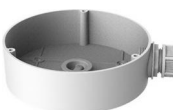
HDM18

- \varnothing 111*37mm
- Aluminum



HDM21

- \varnothing 137*42mm
- Aluminum



HDM45

- \varnothing 140*40mm
- Aluminum



HDM46

- \varnothing 120*37.2mm
- Aluminum



HDM55

- \varnothing 155*36mm
- Aluminum



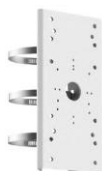
HPT6

- \varnothing 137*42mm
- Aluminum



H275-S-S

- 144*131.6*44.3mm
- Stainless Steel



H275

- 250*126*46mm
- SECC



H275-S

- 250*126*46mm
- Stainless Steel



H276

- 250*126*105mm
- SECC



H276-S

- 250*126*105mm
- Stainless Steel



H475-S

- 250*126*46mm
- Stainless Steel



H476-S

- 250*126*105mm
- Stainless Steel



H673

- 194*117*46mm
- Stainless Steel



H278

- 160*113.82*40mm
- SECC



H292

- 97.1*70*181.8mm
- Aluminum



H618

- 145*110*189mm
- Aluminum



H602

- 182*97*305mm
- Aluminum



H602-P

- 194*117*351mm
- Aluminum+SECC



H602-C

- 194*177*415mm
- Aluminum+SECC



H602-B

- 310*209*396.5mm
- Aluminum



H602-B-P

- 209.7*314*600.8mm
- Aluminum+SECC



H602-B-C

- 255.5*314*546.4mm
- Aluminum+SECC



H603-P

- 182*98*364.1mm
- Aluminum



H603-P-P

- 194*126.1*410.6mm
- Aluminum+SECC



H604-B

- 395.5*281.2*170.7mm
- Aluminum



H604-B-P

- 456.5*314*194.9mm
- Aluminum+SECC



H604-B-C

- 542.5*255.5*200mm
- Aluminum+SECC



H4603

- 180*97*329mm
- Aluminum



H4604

- 124*189*397mm
- Aluminum



H271-DM25

- $\varnothing 150 \times 545$ mm
- Aluminum



H279

- $\varnothing 38 \times 245$ mm
- Aluminum



H660

- 950*800mm
- SECC



H661

- $\varnothing 116.5 \times 200$ mm
- Aluminum



H662

- $\varnothing 116.5 \times 500$ mm
- Aluminum



H663

- $\varnothing 116.5 \times 56$ mm
- Aluminum



H701

- 228*140*412.5mm
- Stainless Steel



H697

- 126*222*328
- Stainless Steel



H674

- 310*209*89mm
- Aluminum

JUNCTION BOX & BRACKET

Applicable for Hikvision Cameras



H110	• \varnothing 110*122*169mm
H110-T	• \varnothing 110*122*169mm
H120	• \varnothing 120*122*173.5mm



H110B	• \varnothing 110*180*227.8mm
H110B-T	• \varnothing 110*180*227.8mm
H120B	• \varnothing 120*180*233mm



H130	• \varnothing 132*183.5*228.5mm
H130-T	• \varnothing 132*183.5*228.5mm
H135	• \varnothing 136*183.5*230mm
H140	• \varnothing 140*183.5*232mm
H140-DM45	• \varnothing 140*183.5*232mm
H155	• \varnothing 155*183.5*240mm



H271-110-T	• \varnothing 110*545* \varnothing 150mm
H271-120	• \varnothing 120*545* \varnothing 150mm
H271-130-T	• \varnothing 132*545* \varnothing 150mm
H271-135	• \varnothing 136*545* \varnothing 150mm
H271-140	• \varnothing 140*545* \varnothing 150mm
H471-155	• \varnothing 155*545* \varnothing 150mm

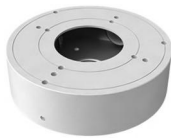


H130B	• \varnothing 132*243*288.5mm
H130-TB	• \varnothing 132*243*288.5mm
H135B	• \varnothing 136*243*290mm
H140B	• \varnothing 140*243*292mm
H140-DM45B	• \varnothing 140*243*292mm
H155B	• \varnothing 155*243*300mm

Applicable for TVT Cameras



T0105	•109.5*38.8mm •Aluminum
--------------	----------------------------



T0106	•132*38.8mm •Aluminum
--------------	--------------------------



T0101B	•117.9*39mm •Aluminum
---------------	--------------------------



T0301	•117.9*47mm •Aluminum
--------------	--------------------------



T0203	•154.9*129.8*74.4mm •Aluminum
--------------	----------------------------------

Applicable for Tiandy Cameras



TDP54	•117*41mm •Aluminum
--------------	------------------------



TDP54-B	•117*41mm •Aluminum
----------------	------------------------

JUNCTION BOX & BRACKET

Applicable for Uniview Cameras



Y03-D

- 126.7*126.4*184.4mm
- Aluminum



Y07/03-G

- 126.7*128.8*231.4mm
- Aluminum



Y03-G

- \varnothing 108.6*38.5mm
- Aluminum



Y03-H

- \varnothing 126*38.5mm
- Aluminum



Y03-I

- \varnothing 117.8*38.5mm
- Aluminum



Y04-C

- \varnothing 144.8*42.5mm
- Aluminum



Y04-D

- \varnothing 149.2*42.5mm
- Aluminum



Y05-A

- 93*93*39mm
- Aluminum



Y05-B

- \varnothing 104.4*54.5mm
- Aluminum



Y06-A

- 104*104*55.5mm
- Aluminum



Y07-D

- 125*125*55mm
- Aluminum



YP06

- 127*136*62.4mm
- Aluminum



YP06-B

- 99*90*38mm
- Aluminum



YP06-C

- 127*136*62.5mm
- Aluminum



YP08-A

- 215*175*60mm
- SECC



YC08-A

- 215*210*122mm
- SECC



Y45

- 230.3*141*201.5mm
- Aluminum



Y45-A

- 216*141*314mm
- Aluminum

SYU Series



S101

- 166*130mm
- Aluminum



S102

- 185*140*76mm
- Aluminum



S103

- \varnothing 171.7*183.5*250mm
- Aluminum



S201

- 129*42mm
- Aluminum



S201-T

- 129*44mm
- Aluminum+SECC

SHAPED BRACKET



S701-1

1Meter Pole and Wall Mount Universal Bracket

- Galvanized Steel
- Pipe Diameter:38mm
- Color: White
- 1pcs universal joint include

S701-1.5

1.5Meter Pole and Wall Mount Universal Bracket



S703-1

1Meter Double Head Wall Bracket

- Galvanized Steel
- Pipe Diameter:38mm
- Color: White
- 2pcs universal joint include

S703-2

1.5Meter Double Head Wall Bracket



S702-1

1Meter Single Head Wall Bracket

- Galvanized Steel
- Pipe Diameter:38mm
- Color: White
- 1pcs universal joint include

S702-1.5

1.5Meter Single Head Wall Bracket



S704-1

1Meter Wall Bracket Plus

- Galvanized Steel
- Pipe Diameter:76mm
- Color: White
- No bracket included, fits regular pole bracket.

S704-1.5

1.5Meter Wall Bracket Plus



S705

Face Temperature Measuring Column

- SECC
- 1342*98.5*225MM
- Color: White



S705-A

Face Temperature Measuring Column With Base

- SECC
- 1342*98.5*225MM
- Color: White

HYDRAULIC FRONT MAINTENANCE BRACKET



46 inch hydraulic front maintenance bracket

Suitable for 46-inch LCD splicing screen

49 inch hydraulic front maintenance bracket

Suitable for 49-inch LCD splicing screen

55 inch hydraulic front maintenance bracket

Suitable for 55-inch LCD splicing screen

- Thickness: 2.0mm

- Sheet Metal Surface Treatment: Electrostatic Spray

- Color:Black



Combination Pole

- Diameter: 114-76mm
- Thickness: 1.8mm
- Chassis: \varnothing 250mm
- Chassis Thick: 12mm
- Mounting hole: 4* \varnothing 16mm
- Color: White/Black/Blue
- Galvanized steel
- Root \bullet 145*145*400
- Standard Accessories :
Lightning rod, lock nut, bracket mounting wrench, white plug, turning parts, instructions.

3Meter Pole

Assembly mode:
1M Bottombars
1M Lengthening rod
1M Mounting rod

3.5Meter Pole

Assembly mode:
1M Bottombars
1.5M Lengthening rod
1M Mounting rod

4Meter Pole

Assembly mode:
1M Bottombars
1.5M Lengthening rod
1.5M Mounting rod

4.5Meter Pole

Assembly mode:
1.5M Bottombars
1.5M Lengthening rod
1.5M Mounting rod



Combination Pole PLUS

- Diameter: 114mm
- Thickness: 2mm
- Chassis: \varnothing 300*300mm
- Chassis Thick: 13mm
- Mounting hole: 6* \varnothing 16mm
- Color: White/Black/Blue
- Galvanized steel
- Root \bullet 145*145*700
- Standard Accessories :
Lightning rod, bracket mounting wrench, white plug, instructions.

5Meter Pole

Assembly mode:
1.5M Bottombars
1M Lengthening rod*2
1.5M Mounting rod

6Meter Pole

Assembly mode:
1.5M Bottombars
1.5M Lengthening rod*2
1.5M Mounting rod



- LOW TRANSPORTATION COSTS
- EXTENSIVE EXPANDABILITY
- STOCKPILE CONVENIENTLY
- EASY ASSEMBLY





FACTORY OUTLET



CUSTOM DESIGN



CRAFTSMANSHIP QUALITY

